

**Meeting #4 : 4/27/15**

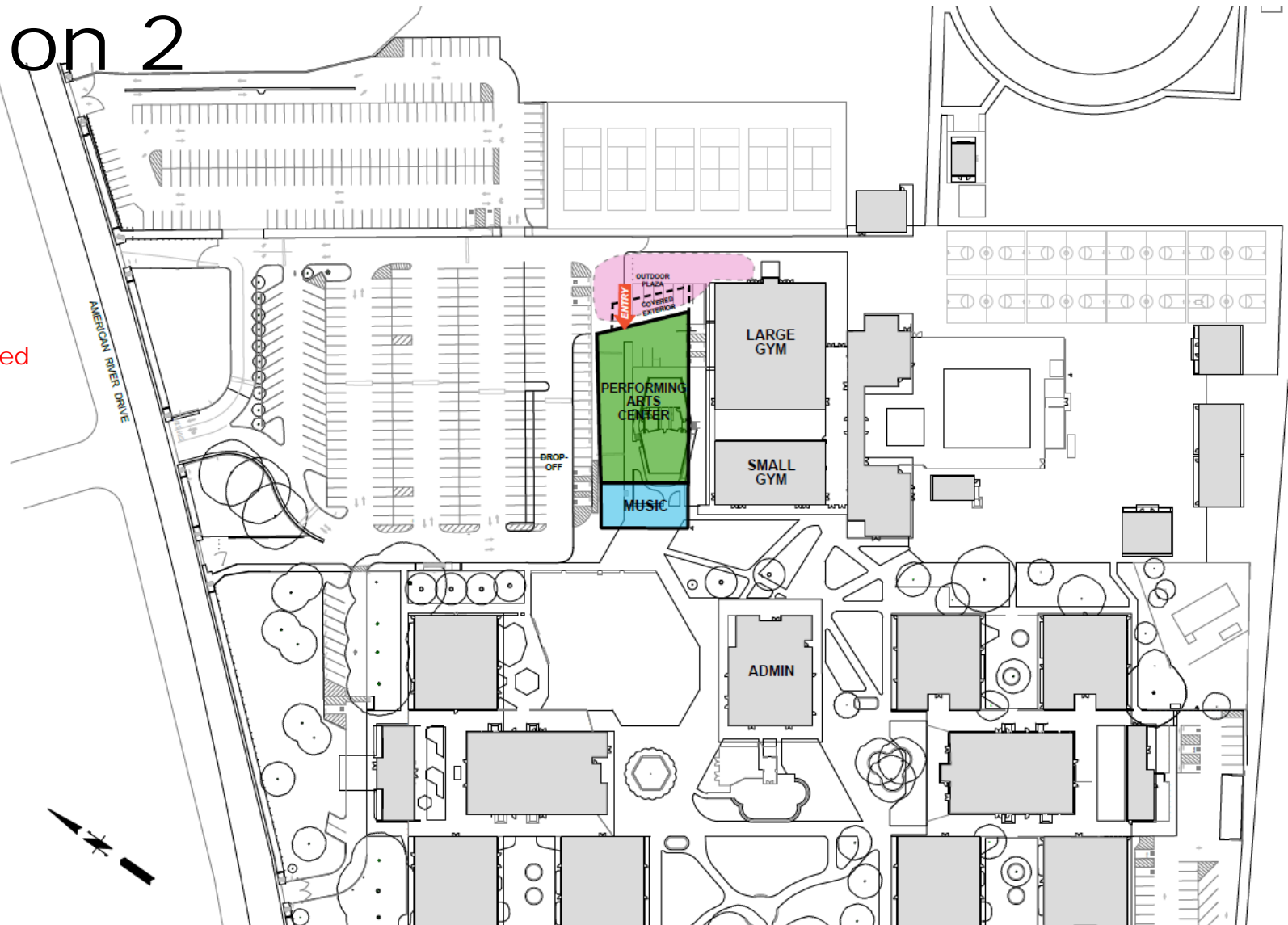


# **Rio Americano High School**

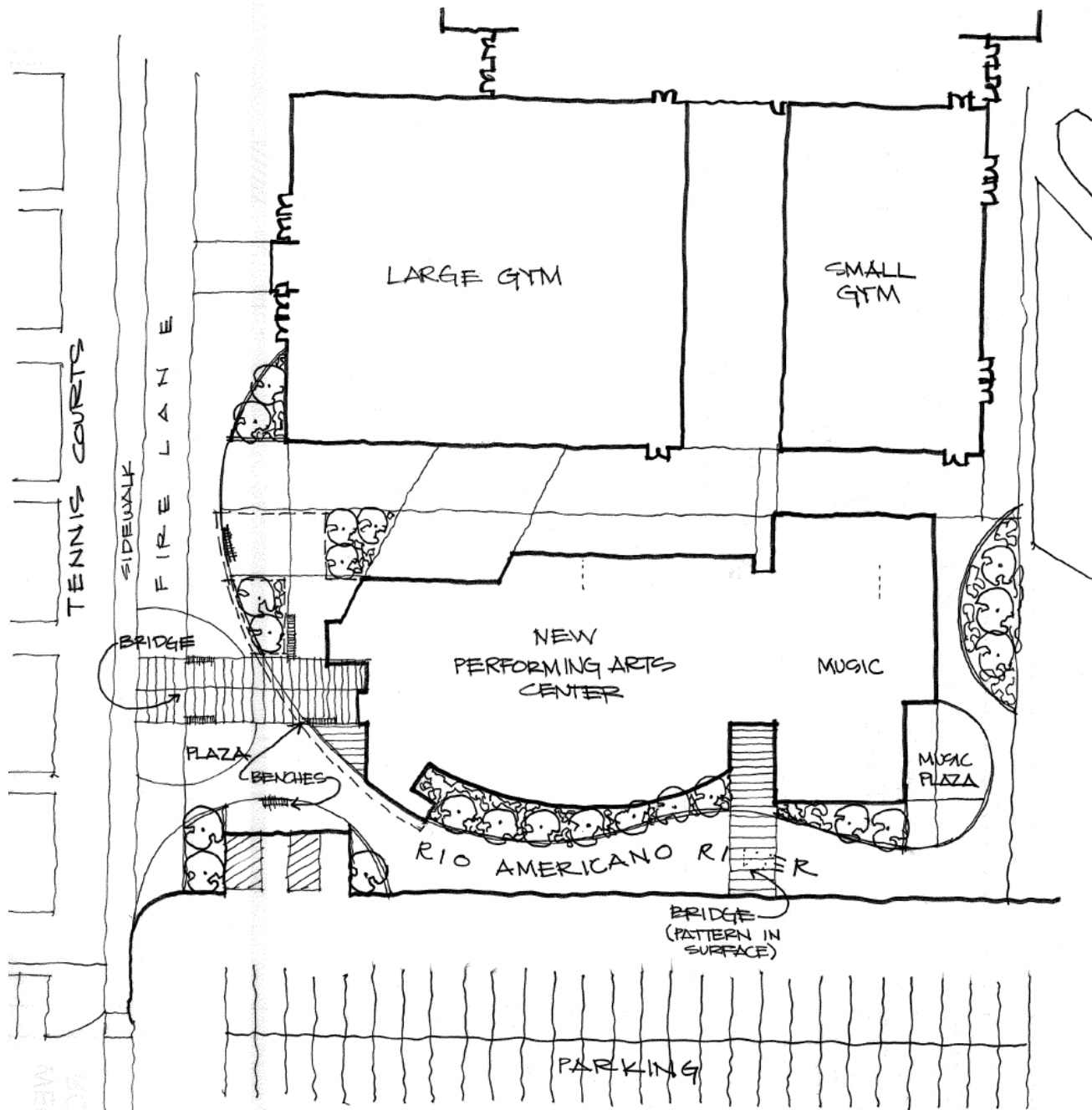
## **Performing Arts & Music Center**

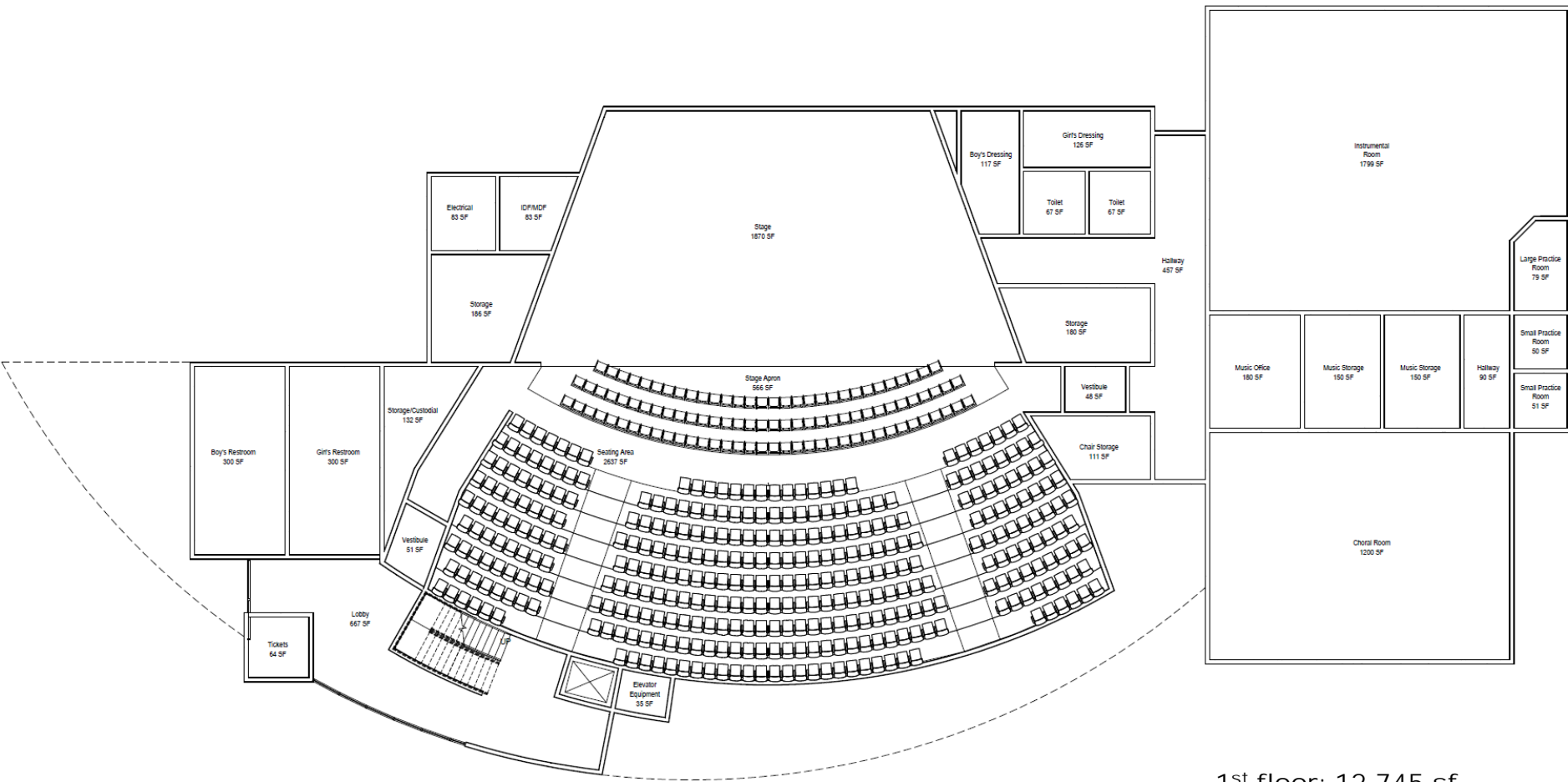
# Option 2

45 parking stalls displaced

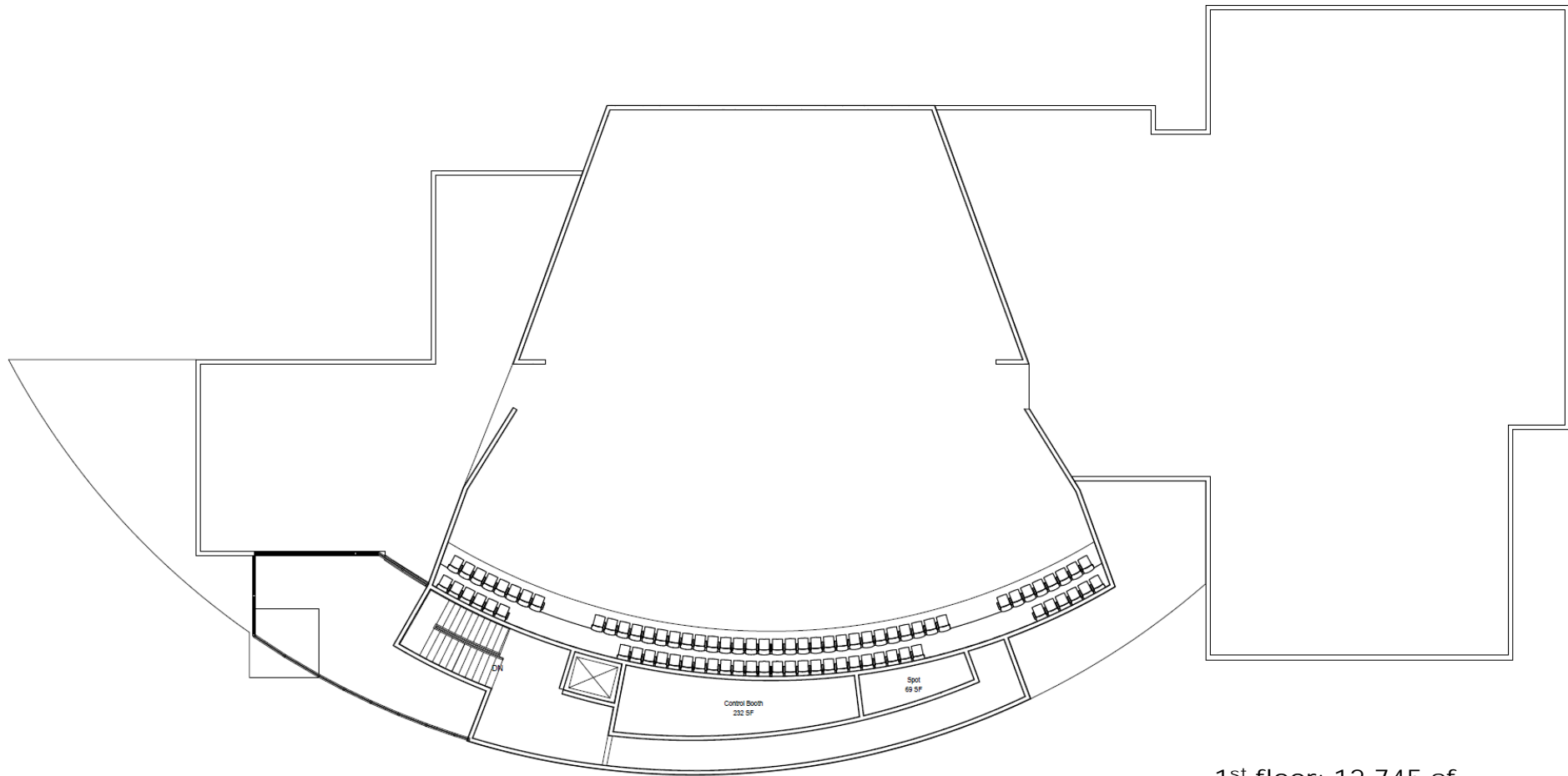


$\$9.18\text{M} \times 1.3 = \$11.9 \text{ M for Project Cost (Budget)}$

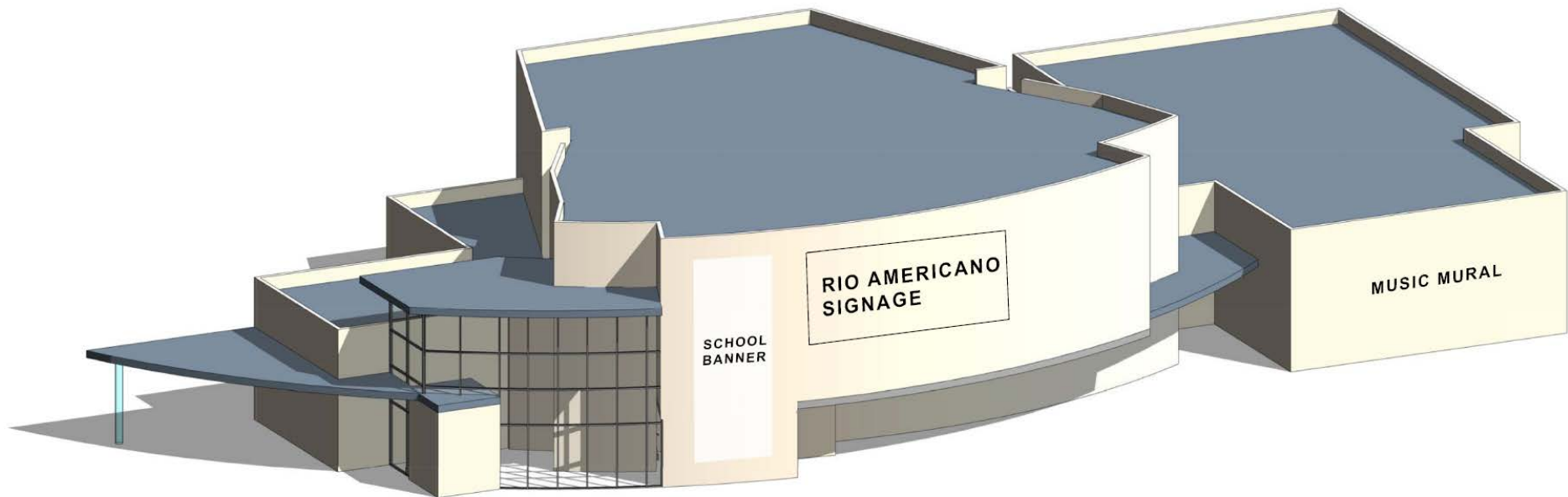




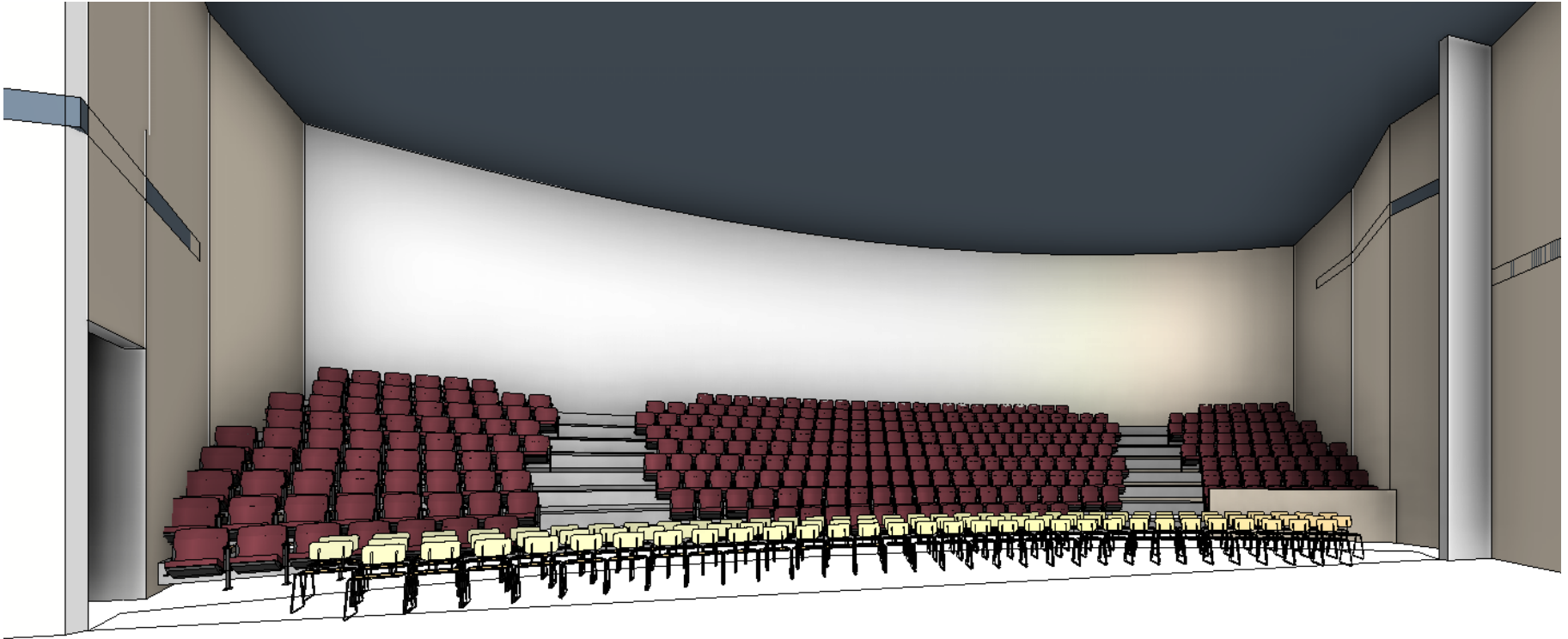
1<sup>st</sup> floor: 12,745 sf  
 2<sup>nd</sup> floor: 896 sf  
**Total: 13,641 sf**



1<sup>st</sup> floor: 12,745 sf  
2<sup>nd</sup> floor: 896 sf  
**Total: 13,641 sf**









# Seating Layout Option A

(350 seats)

